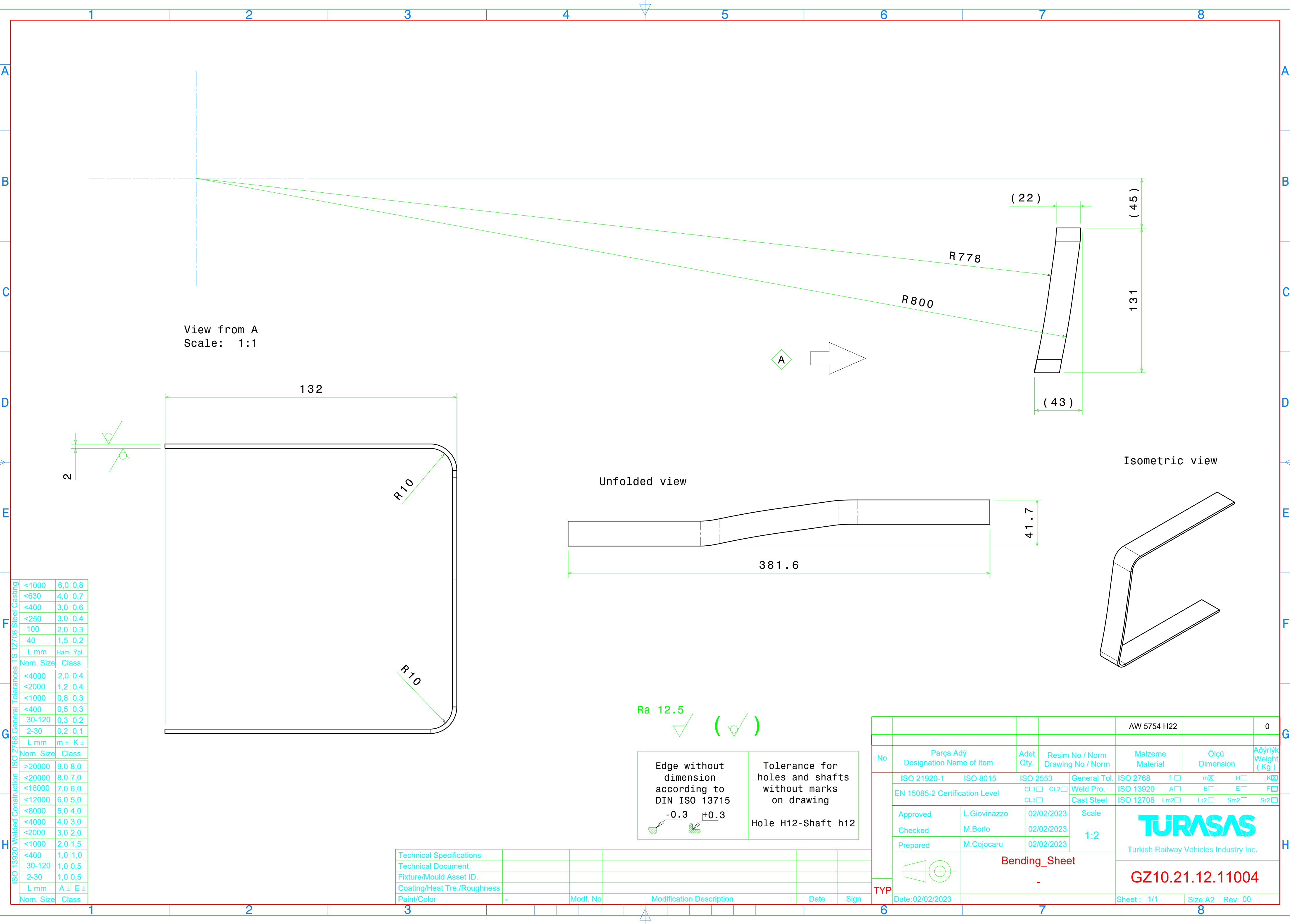


Reproduction, dissemination or use of this document or its all contents in any form without the prior written permission of TURASAS, is prohibited. Offenders will be liable for the payment of damages. All rights reserved in the event of the grant of a patent, utility model or ornamental design registration.



View from A  
Scale: 1:1

Unfolded view

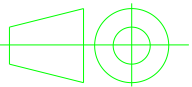
Isometric view

ISO 2768 General Tolerances	<1000	6,0	0,8
	<630	4,0	0,7
ISO 13920 Welded Construction	<400	3,0	0,6
	<250	3,0	0,4
ISO 13920 Welded Construction	100	2,0	0,3
	40	1,5	0,2
ISO 13920 Welded Construction	L mm	Ham	Ypl.
	Nom. Size	Class	
ISO 13920 Welded Construction	<4000	2,0	0,4
	<2000	1,2	0,4
ISO 13920 Welded Construction	<1000	0,8	0,3
	<400	0,5	0,3
ISO 13920 Welded Construction	30-120	0,3	0,2
	2-30	0,2	0,1
ISO 13920 Welded Construction	L mm	m ±	K ±
	Nom. Size	Class	
ISO 13920 Welded Construction	>20000	9,0	8,0
	<20000	8,0	7,0
ISO 13920 Welded Construction	<16000	7,0	6,0
	<12000	6,0	5,0
ISO 13920 Welded Construction	<8000	5,0	4,0
	<4000	4,0	3,0
ISO 13920 Welded Construction	<2000	3,0	2,0
	<1000	2,0	1,5
ISO 13920 Welded Construction	<400	1,0	1,0
	30-120	1,0	0,5
ISO 13920 Welded Construction	2-30	1,0	0,5
	L mm	A ±	E ±
ISO 13920 Welded Construction	Nom. Size	Class	

Ra 12.5  
(✓)

Edge without dimension according to DIN ISO 13715  
Tolerance for holes and shafts without marks on drawing  
Hole H12-Shaft h12

Technical Specifications					
Technical Document					
Fixture/Mould Asset ID.					
Coating/Heat Tre./Roughness					
Paint/Color	-	Modif. No	Modification Description	Date	Sign

				AW 5754 H24		0			
No	Parça Adý Designation Name of Item	Adet Qty.	Resim No / Norm Drawing No / Norm	Malzeme Material	Ölçü Dimension	Ağırlık Weight ( Kg )			
TYP	ISO 21920-1	ISO 8015	ISO 2553	General Tol.	ISO 2768	f <input type="checkbox"/>	mX <input checked="" type="checkbox"/>	H <input type="checkbox"/>	K <input checked="" type="checkbox"/>
	EN 15085-2 Certification Level		CL1 <input type="checkbox"/> CL2 <input type="checkbox"/> CL3 <input type="checkbox"/>	Weld Pro. Cast Steel	ISO 13920	A <input type="checkbox"/>	B <input type="checkbox"/>	E <input type="checkbox"/>	F <input type="checkbox"/>
	Approved	L.Giovinazzo	02/02/2023	Scale	ISO 12708	Lm2 <input type="checkbox"/>	Lr2 <input type="checkbox"/>	Sm2 <input type="checkbox"/>	Sr2 <input type="checkbox"/>
	Checked	M.Borio	02/02/2023	1:2	<div>TURASAS</div> <div>Turkish Railway Vehicles Industry Inc.</div>				
	Prepared	M.Cojocar	02/02/2023						
		Bending_Sheet			GZ10.21.12.11004				
	-								
Date:02/02/2023					Sheet : 1/1	Size:A2	Rev: 00		